

Product Specifications

| | | | | | |
|--|---|----------|---------|---------|---------|
| Material | Environmentally friendly recyclable UV-stabilized polypropylene | | | | |
| Size | 378 x 378 x 10.1mm | | | | |
| Weight per tile | Piazza 412.2 g / Metro 350g / Elite 480g | | | | |
| Point weight in room temperature +19° C | Weighted area | Pressure | Piazza | Metro | Elite |
| | 1 cm ² | | 130 kg | 85 kg | 85 kg |
| | 4 cm ² | | 500 kg | 370 kg | 480 kg |
| | 1 dm ² | | 5000 kg | 2500 kg | 2500 kg |

| | | | | | | | |
|------------------|-------------|---------------------------|---|--|--|--|--|
| Packaging | Product | Tiles | Mini-carton = 7 tiles = 1m ² Maxi-carton = 35 tiles = 5m ² | | | | |
| | Accessories | Edgetiles | Singly | | | | |
| | | Corners | Singly | | | | |
| | | Décor Strips | Singly | | | | |
| | | Décor Squares | Singly | | | | |
| | | Jointstrips | pack of 36 - only in constant temperatures - Elite only | | | | |
| Tools | | Single Tile Lifter | Lifts one tile out of the floor | | | | |
| | | Multi Unzip Tool | Unzips a whole row of tiles | | | | |

| Colours* | Piazza | Metro | Elite | Edges | Corners | D'strip | D'squares | Jointstrips |
|---|--------|-------|-------|-------|---------|---------|-----------|-------------|
| Stone Grey  | ✓ | ✓ | | ✓ | ✓ | | | ✓ |
| Pearl Grey  | | | ✓ | ✓ | ✓ | | | |
| Graphite Grey  | | ✓ | ✓ | ✓ | ✓ | | | ✓ |
| Sand  | ✓ | ✓ | | ✓ | ✓ | ✓ | ✓ | |
| Terracotta  | ✓ | ✓ | | ✓ | ✓ | ✓ | ✓ | |
| Sienna  | ✓ | | ✓ | ✓ | ✓ | | | |
| Steel Blue  | ✓ | ✓ | | ✓ | ✓ | ✓ | ✓ | |
| Grass Green  | ✓ | ✓ | | ✓ | ✓ | ✓ | ✓ | |
| Dark Green  | ✓ | ✓ | ✓ | ✓ | ✓ | ✓ | ✓ | |

*colours indicated are an approximate guide only

Talk to Tact, the flooring specialist

Reasons to choose TactTiles

Made from quality virgin polypropylene, all TactTiles interlocking flooring systems are:

- easy to lay
- durable - average lifespan of 15 years
- UV Stable
- Relocatable
- Recyclable

Accessories include:

- Edgetiles 378 x 55mm
- Cornertiles 55 x 55mm
- Décor Strips 378 x 55mm
- Décor Squares 55 x 55mm
- Jointstrips 378mm (only to be used in constant temperatures)

Not only are TactTiles simple to lay, either DIY or on a contract basis, they are also incredibly easy to clean; just sweep, vacuum, mop or pressure wash for a practical floor that keeps its clean lines and good looks for years and years.

tact+
specialist flooring solutions



Portfield Farm
Langport
Somerset TA10 0NJ
Tel: +44 (0)1458 253395
Fax: +44 (0)1458 253645
info@tactltd.com
www.tactltd.com

**Elite, Piazza and Metro
Flooring for indoors and out**

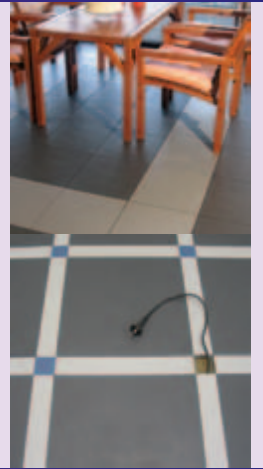
Elite



Elite - for indoors and out

new

An Elite floor provides a comfortable and aesthetically pleasing surface which is slightly textured for good anti-slip properties. A unique cable management capability through colour contrasting Décor Strips, makes the Elite particularly suitable for exhibition stands, meeting rooms and other modern commercial and domestic applications. This new, stylish and contemporary flooring system works well in many environments, both indoor and outdoor.

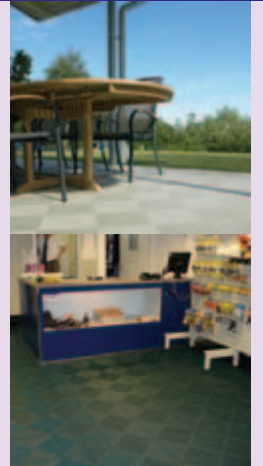


Piazza



Piazza - for practicality

Truly versatile, Piazza is strong and durable with a multitude of applications both domestic and commercial. For poolsides, garages, shops, libraries and even light warehousing use, Piazza is a winner. The linear design creates a pleasing diamond effect when laid which is very popular and with a well supported structure beneath, Piazza is the number one tile for balconies, where its light weight and free draining capabilities mean that even a flat roof can be turned into a useful relaxation space.



Metro



Metro - the style tile

The perforated snowflake design of the Metro tiles allow water to drain and air to circulate; a must for 'wet area' flooring requirements. Successful applications include poolsides, changing rooms, balconies, terraces and storage rooms. With impressive anti slip properties the cost effective Metro continues to be one of the favourite coverings for a diverse range of wet floor scenarios.

